

Maybe3D Products Installation Guide

3D images installation on the web site

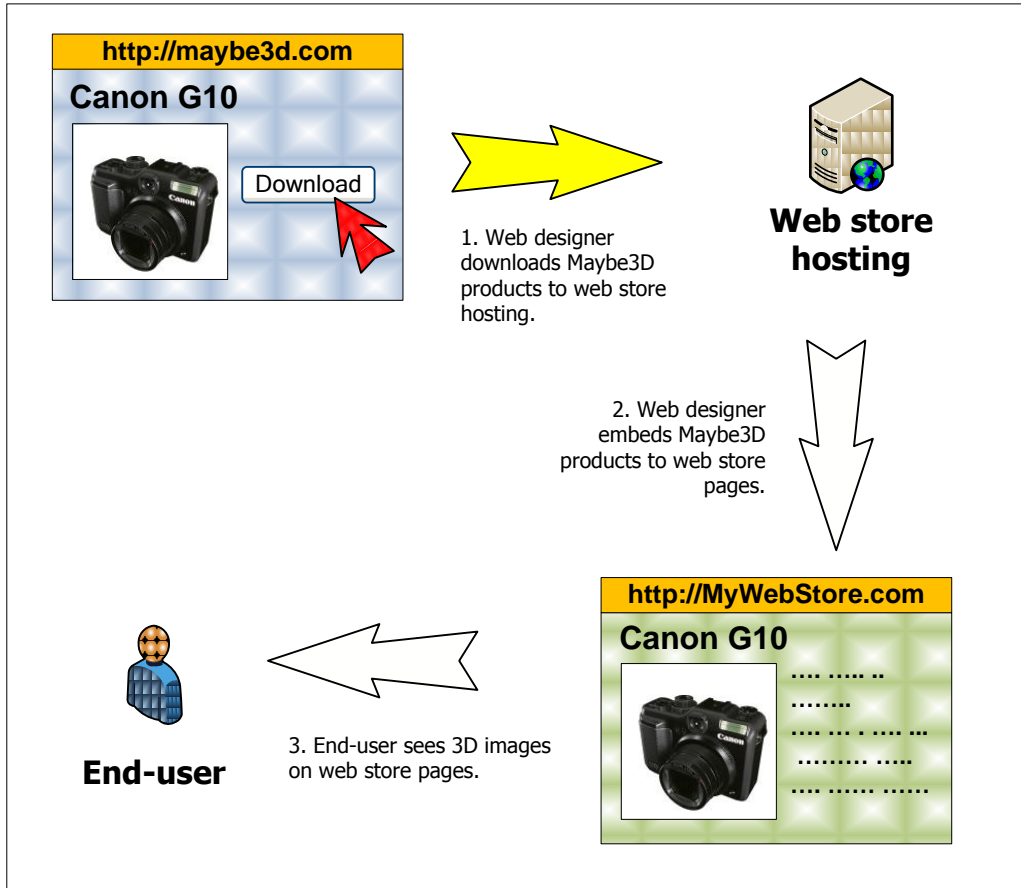
Contents

Contents	2
Introduction.....	3
Terminology.....	3
Products download.....	4
Downloading products using site	4
FTP-access	4
Product deployment at the hosting	4
File product structure	5
Embedding products to the web pages.....	5
HTML code of embedding	5
Maybe3D product parameters	6
Language settings	7
Automatic products installation	7
Deployment recommendations	8
Questions and suggestions.....	8

Introduction

Maybe3D products are intended for the presentation of high quality 3D models on the sites of web stores and other organizations.


You can see the common scheme of Maybe3D products usage below.



For proper work and presentation of Maybe3D products, the CPU speed of end-user PC must not be less than 1.8 GHz.

[Adobe Flash Player 10](#) browser plug-in must be installed.

PRODUCTS USAGE TERMS

 All the Maybe3D products, including their components, are provided in accordance with the principle "AS IS", without any guarantees, evident or implied, – including but not being limited by the guarantees of commercial value, of the correspondence with the purpose. Maybe3D Company by no means is liable for indemnify for losses, actions for damages or other claims appeared as a result of use of products.

Terminology

Vendor	An organization producing the target goods.
Model	The item of production that is not divided into sub-types.

Part Number	The unique model identifier for a single vendor. It usually consists of Roman letters and numbers. The pair of vendor plus part number clearly means the price position (the goods package), including color.
Category	The type of the model such as notebook, mobile phone or photo camera. One model may match several categories.
Maybe3D product	3D image of the model. One model corresponds each product and defines its name. The product is the folder with swf files and several utilities.
Product ID	The unique identifier of Maybe3D product. It may consist of Roman letters and Arabic numbers. Maximum eight symbols.
Same models	The models of the same vendor with different names and part numbers, but with the identical appearance, including the color and inside (invisible) components. For instance, the same models are Asus PC1000 white, Asus PC1000 black, and Asus PC1000HD. One product is suitable for the representation of these models. For the variety of the same models only one of them is to be indicated as the primary model.
Product Package	One or several products packed in ZIP archive.
Context Information	The information kept in the product in different languages and represented as tooltips near the cursor.

Products download

Downloading products using site

You can download the products you need using the interface of <http://maybe3d.com> site.

1. Go to <http://maybe3d.com>.
2. Then go to the section named 3D Catalogue.
3. Find the product you need using the filter by category, vendor, line or key words search.
4. Select products you need. Also, you can use "Select All" Button.
5. Press "Download" button.
6. The download of the package with products is to be launched.

FTP-access

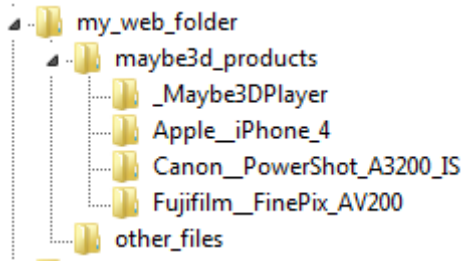
You can use FTP-client to access to products of our 3D-Catalogue

FTP-Server: <ftp://maybe3d.com>
 Username: webstore
 Password: webstore

Product deployment at the hosting

In order to use Maybe3D products you need to have the hosting with high speed file download. For file keeping you need to have a free place on the basis of 2 Mb per a product.

1. You should create the separate folder in the file folder of your web application and give it a name, for instance **maybe3d_products**.
2. Place in it folder with player _Maybe3DPlayer (can be downloaded from our ftp server)
3. Unpack the packages to this folder (ZIP files downloaded from <http://maybe3d.com>) with the documents you need. You need to have the following folders structure:



Now, If the folder **my_web_folder** is supposed to be the root folder for your web application, you can use Maybe3D products at address:

maybe3d_products/PRODUCT/PRODUCT.swf

For instance, **maybe3d_products/Canon__500D/Canon__500D.swf**.

File product structure

The product is the folder with 3 files bearing the same name as the product folder but different extension:

- **PNG** file consists of the product image in the resolution of 150x150 pixels. It can be used for the fast orientation in the product directory.
- **SWF** file is the main program file of the product. This file is used for the reference in the process of placement of the product on the web page.
- **XML** file has the product description. There is such data as the name of the vendor, the product model line, supported languages, etc.

For instance:

```
[Canon__200]
├─ Canon__200.png
├─ Canon__200.swf
└─ Canon__200.xml
```

Embedding products to the web pages

For embedding products to the web page it is recommended to use SWFObject library (<http://code.google.com/p/swfobject/>). This library will allow minimizing possible problems with different browsers. The library is granted gratis for any aims.

HTML code of embedding

You should use the following pattern to embed the product to the web page:

```
<div id="MTD_PRODUCT">
  <a href="http://www.adobe.com/go/getflashplayer">
    </a>
</div>
```

Code of model embedding in the container:

```
<script src="swfobject.js" type="text/javascript"></script>
<script type="text/javascript">
  var flashvars = {
    language: "ru"
  };
  var params = {
```

```

    menu: "false",
    scale: "noScale",
    allowFullscreen: "true",
    allowScriptAccess: "always",
  };
  var attributes = {
    id:"Canon__500D"
  };
  swfobject.embedSWF("maybe3d_products/Canon__500D/Canon__500D.swf", "MTD_PRODUCT",
  "700px", "500px", "10.0.0", "expressInstall.swf", flashvars, params, attributes);
</script>

```

Function `swfobject.embedSWF()` assumes following parameters (in order of priorities):

1. The way to swf-file with model;
2. Identifier of container for model embedding (attribute `id` of the element `div` in the example above);
3. the size of model across;
4. vertical size of model (the recommended size 700x500 px);
5. minimal version of player;
6. the way to installer of updating for flash-player (usually is located near swfobject);
7. **flashvars** – array of parameters transferring to model (for details look at the table below);
8. **params** – parameters of flash-player. Recommended parameters are set in the example above, the full list is available in documentation (http://kb2.adobe.com/cps/127/tn_12701.html#main_Optional_attributes);
9. **attributes** – attributes of element with player. Only `id` parameter is used, which should be set obligatory. Мы рекомендуем использовать в качестве название файла продукта без расширения. We recommend to use as `id` the name of product file without extension.

Maybe3D product parameters

In the following table you can find parameters of 3D player launch, that can be set in **flashVars**. The default values are underlined.

Parameter	Possible values	Comment
language	<u>auto</u> , en, es, fr, de, ru, it	The context information language.
bgColor_Spot	Color in hexadecimal format RRGGBB	Color of bright point at background.
bgColor_Basic	Color in hexadecimal format RRGGBB	Basic background color.
bgColor_Back	Color in hexadecimal format RRGGBB	Backlight background color.
borderColor	Color in hexadecimal format RRGGBB	The application border color.
pointColor	Color in hexadecimal format RRGGBB	The color of the big point showing the tooltip placement.
fillColor	Color in hexadecimal format RRGGBB	The color of the tooltip rectangle filling.
lineColor	Color in hexadecimal format RRGGBB	The color of the tooltip line.
progressBarColor	Color in hexadecimal format RRGGBB	Progress bar color.

textColor	Color in hexadecimal format RRGGBB	The color of the tooltip text.
fontFace	String	The name of the application font.
fontSize	Positive integers	The size of the basic application font.
disableHelp	true , false	If the value equals true, the tooltip in the right upper corner of the application will not be represented.
disableSound	true , false	If the value equals true, the sounds of the application will be switched off.
enableAutoRotation	true , false	If the value equals true , the model will roll automatically until the user clicks mouse over it. We wouldn't recommend you to use this parameter as it causes the high load of the end user PC. The user should switch off this option from the page.
showInfoPaner	true , false	Manages initial imaging of the panel with tooltips. If false is set, the panel will be rolled up

All the above-mentioned parameters have the values by default. It is not necessary to fill them.

Language settings

You are likely to change the parameter **language** so that the tooltips are presented on the native language of your website users.

At the moment the following languages are available for most models:

 English (USA)	(en)
 Spanish	(es)
 French	(fr)
 German	(de)
 Russian	(ru)
 Italian	(it)

If the language value is **auto**, the language will be chosen for each user automatically in accordance with the regional settings of his PC. In case the user language is not supported, English will be used for the context information.

Automatic products installation

Modern web stores contain thousands of different products and installation of models by hand can become long and laborious task. Taking into consideration, that new models appear every month, support of catalogue in actual state monthly requires working hours. Automatic installation allows simplifying this process – it is enough only once realize support of autoinstall Maybe3D service. At first request autoinstall service tries to recognize the product located at the page, and at every further request will return the name of model. This allows reducing the support costs to zero. Documentation on introduction of automatic installation service you can download from our web site: http://services.maybe3d.com/files/Maybe3D_AutoInstall_Ru.pdf

Deployment recommendations

- You should check the functioning of the models placed on the web pages in several popular browsers..
- The increase of models number on the page raises the amount of outcome traffic. The models loaded by the user are cached at his PC, and the next loading is made almost without data transmission from the server. The first download of the product (1 Mb) can take 1-3 sec at 2 Mbps download speed.
- The PC load does not depend on the number of the models on the web page. This rule will not be valid if the parameter **enableAutoRotation** is switched on. The availability of several automatically rolling models in the web page may overload the user PC.
- The recommended size of the application is **700x500** pixels.
- You should use the script parameters and application colors in order to match the application appearance with your site design.
- As for any other information about the goods in the web store, we recommend you to place the warning that the goods and their features in reality may differ from the indicated ones.
- One of the interesting ways is the simultaneous placement of two 3D images on the same page of the goods comparison.

Questions and suggestions

Please, send your questions and suggestions to support@maybe3d.com.